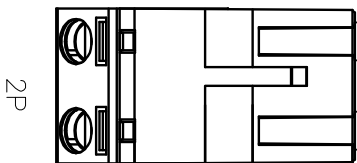
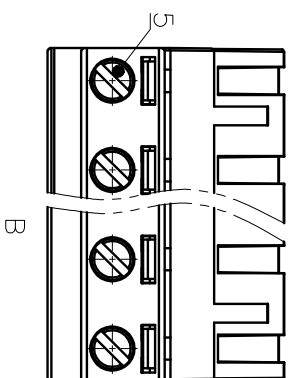
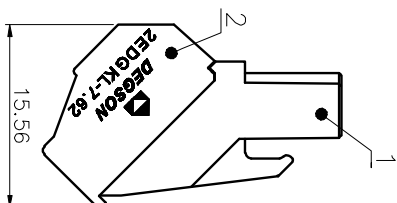
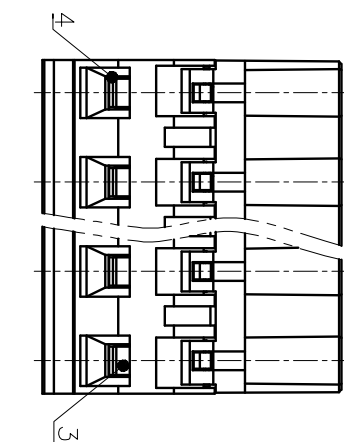
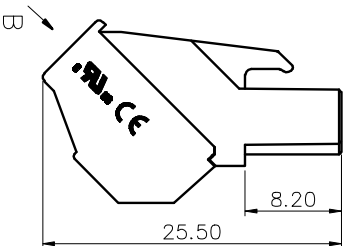
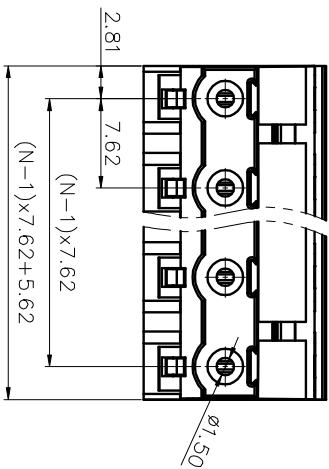


精度等级/General Tolerances(mm)		公差等级/General Tolerances(mm)										公差等级/General Tolerances(mm)		
0	>3	>6	>10	>18	>30	>50	>80	>120	>180	>250	>315	>400	>500	0.1/1/10
~	~	~	~	~	~	~	~	~	~	~	~	~	~	±Z
3	6	10	18	30	50	80	120	180	250	315	400	500	>500	±Z
±0.12	±0.18	±0.22	±0.26	±0.31	±0.37	±0.57	±0.80	±0.93	±1.05	±1.15	±1.60	±2.20	±2.50	±Z



REV	ECN	DESCRIPTION	DRAFT	DATE	SIZE: A4	SCALE: 2:1	TYPE: CUSTOMER DRAWING	SHEET
								1/1

5	Screw1	Steel	M3/Zn Plated	
4	Cage	Copper alloy	M3/Ni Plated	
3	Clamp	Copper alloy	Sn Plated	
2	Cover	PA66	UL94V-0	
1	Housing	PA66	UL94V-0	

ITEM NAME OF PART MATERIAL NOTES

UL 标准/UL Standard: B C D

额定电压/电涌/Rated Voltage(V)/Current(A) 300/10 / 300/10

IEC 标准/IEC Standard: III/3 III/2 II/2

过压类别/Overvoltage Category/污染等级 III/3 III/2 II/2

绝缘/Insulation Degree 4000/12 6300/12 10000/12

额定电压/电涌/Rated Voltage(V)/Current(A) 4000/12 6300/12 10000/12

额定冲击电压(kV)/Rate Impulse Voltage(kV) 6 6 6

额定扭矩/Torque Tightening(N·m/Lbin) M3, 0.5/4.43

拧紧范围(扭矩和线长)/Wire Range(rigid and flexible)(mm²/AWG) 0.2~2.5/24~12

间距/Pitch(mm)/线数范围/Poles 7.62/N=02~16P

剥线长度/Stripping length(mm) 10~11

使用温度范围/Operating temperature(°C) -40~+105

符合RoHS标准/Conform to RoHS Yes

MATERIAL: / SURFACE: /

MAT NO.: /

STATUS: /

APPD: /

CHKD: /

DRAFT: WL 2017.8.4

DRAWING NO.: 2EDGKL-7.62-C01

NAME: 2EDGKL-7.62-XXP-1Y-00A(H)

NINGBO DEGSON ELECTRICAL CO., LTD

宁波高松电子有限公司

REV D0-1

1/1